

KOGA REPORT

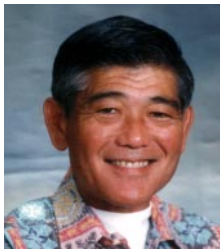
We dig . . . Hawaii!

Volume 14, Number 2, April 2003



The Newsletter of Koga Engineering & Construction, Inc.

Keeping Up With Mal



I don't know about you, but for the past several weeks my eyes have been glued to the TV tube watching as the war in Iraq unfolded. In watching these programs, I am much inspired by our leaders like President George W. Bush, Secretary of Defense Rumsfeld, General Tommy Franks and the rest of the leadership team; our thoughts and prayers go out to our leaders and all of the men and women in our

Armed Forces.

This precision of the military in executing this action prompted me to dig up an essay that I wrote to our employees on June 28, 1991. It talks about leadership and exemplifies the qualities that I see in the men and women leading us today, so I have reproduced the article for this newsletter-I hope you enjoy it.

TEAMWORK

When I was a young lieutenant in the U.S. Army, one of the men who influenced me greatly was Major General Edwin L. Rowney. After soundly reprimanding me for sloppy performance on one occasion, he later awarded me with a framed copy of the essay by an author named Elbert Hubbard entitled "A Message to Garcia". The moral of this essay



From "Da Boss"

By Glenn Nohara

This past quarter we completed four of our larger projects. They are the Marriott Ko Olina Phase I and Kealakehe High School Increment 4 Phase II projects with Dick Pacific Construction, the Marriott Waiohai Phase I

project with Unlimited Construction Services and the Lydgate Park Bike and Pedestrian Path with Kauai Builders.

Our work continues to remain steady as we recently started several new projects. These include the Honolulu Advertiser Production & Distribution Facility and Pearl Harbor BEQ P-467 projects with Dick Pacific Construction, the Schofield Barracks Quad F project with Nan, Inc., the Kauai Judiciary Complex with Unlimited Construction Services, Kuhio Highway Intersection Improvements at South Leho Drive for the State Department of Transportation and the Kailua Kona Wharf Improvements with Hawaiian Dredging Construction Company.

Within a month or two, we expect to start several more projects. These are the Pearl City Traffic Calming Improvements and Keolu Hills Neighborhood Park Sewer Connection projects for the City & County of Honolulu, the Mililani Mauka Unit 131 - 20 Inch Waterline for Castle

was that when given an assignment, one should not question why or how, but to just proceed with accomplishing the mission. In my quest to read more of Hubbard's works, I came across the essay "Helping Yourself by Helping the House." It tells of how employees are an essential part of a team and that one would be well served if they concentrated on doing their job as a team member instead of aspiring to become a one person team or by bucking company policies and their fellow employees. Here are some quotes from this inspiring essay.

"A steamship is manned by a crew, and no one particular sailor is necessary. You can replace any man in the engine-room of the 'Mauretania', and she will still cross the ocean in six days."

"In an enterprise that amounts to anything, all transactions should be in the name of the firm, because the firm is more than any one person connected with it."

"To lose your identity in the business is one of the penalties of working for a great institution."

"The only man who should be given full swing and unlimited power is the one who can neither resign nor run away when the crash comes, but who has to stick and face the deficit and shoulder the disgrace of failure."

"And remember this: Unless somebody assumes the responsibility of defeat, there will be no benefits to distribute. Also this: That the man who is big enough to be a **Somebody** is also willing to be a **Nobody**."

Inspiring words to ponder, especially since they were written in 1899! All pau for this edition of "Keeping up with Mal". Aloha!

& Cooke Homes Hawaii, the Kuhio Highway Resurfacing Hardy Street to Kuene Road project with Jas. W. Glover and the MILCON MDA-463 Launch Facilities @ PMRF with Tomco Corp. Other projects in our backlog include the Wahiawa-Whitmore Waterline, Kona Airport Ramp K and the Maui Costco Expansion.

Our estimating department continues to be busy with many projects to bid or negotiate. Please read the "Crunching Out the Numbers" and the "News" from our various islands on the following pages for more details. Remember to check our website at www.KogaEngineering.com for more information and pictures.

| KOGA REPORT | |
|--------------------------------|---|
| GLENN NOHARA - EDITOR-IN-CHIEF | |
| Mal | 1 |
| "Da Boss" | 1 |
| Kaua'i | 2 |
| Big Island | 2 |
| Oahu | 3 |
| Numbers | 3 |
| Bits | 4 |

News from Kaua'i

By Russell Inouye



As usual the Island Manager who shall remain anonymous has passed on to me the responsibility of writing this article. I will try my best to represent Kaua'i as best as I can. It's been 21 months since my arrival on Kaua'i. How time flies! Soon there will not be enough room on our rear view mirror to hold the monthly parking permits for Lihu'e airport.

Since the last article, Koga's Kaua'i operations are near completion on several projects which include Marriott's Waiohai Beach Club Phase II (Unlimited/Maryl JV), Lydgate Park Bike & Pedestrian Path (Kaua'i Builders), Kaua'i Veterans Memorial Hospital (Neil Nakai, Inc.) and Kuhio Highway Intersection Improvements @ South Leho Drive (DOT). Ongoing projects include Kapa'a Homesteads Well No. 2 (DOW) and Kaua'i Judiciary Complex (Unlimited). Projects on our backlog include Kuhio Highway Resurfacing - Hardy to Kuene Road (Glover) and Launch Facilities @ PMRF (TOMCO Corp).

Congratulations to Marriott and Unlimited/Maryl JV on a successful completion of Phase I at Waiohai. I would like to thank everyone who worked on the Marriott Waiohai Beach Resort for a job well done. It would take the whole page to list all the names, but I would especially want to recognize Bob Connolly and

Derek Ebesu cutting slope at Kuhio Hwy. at S. Leho Drive



Garett Ichimura for commuting daily from O'ahu and seeing the job through from start to finish. Much mahalo Bob and Garett!

The Contractors Association of Kaua'i (C.A.K.) held its 11th Annual Building and Remodeling Expo this past April 11-12. Koga Engineering again had the honor of presenting the Best In Show award and perpetual plaque at this year's event. Congratulations to Familian Northwest for capturing this award for the third time in the last five years!

We again say mahalo to our employees who continue to commute from island to island. Your efforts do not go unnoticed and you are commended for the sacrifices you make and your dedication and commitment to *The Koga Way!*

Finally, I would like to thank all the Kaua'i personnel who have been magnificent to work with day in and day out and made me feel like one of the "Warriors". Sad to say shortly I will be moving on to my next destination, Maui. However, any volunteers are welcome to join me on the Valley Isle. As they say "Here today, gone to Maui"until next time, **'a hui hou malama pono.....**



Slopes grassed and traffic lane prepared for a.c. pavement at South Leho Drive.



News from the Big Island

By Kyle Sakaitani

Phase I of the Kailua-Kona Wharf Improvements is under way with Hawaiian Dredging. The wharf has been a landmark of Kailua town for decades and still serves as the center of activities for fishing, tour boats, cruise ships, in addition to serving as the staging point for the Ironman Triathlon. Environmental issues and the preservation of the nearby Ahuena Heiau is of great importance in this endeavor therefore, great care is being taken to nullify impacts to the surrounding area and to this important historic Hawaiian temple. When the much-needed improvements are completed, the pier will have a repaired foundation, improved utilities, and a new concrete deck but otherwise, will look almost exactly the same.



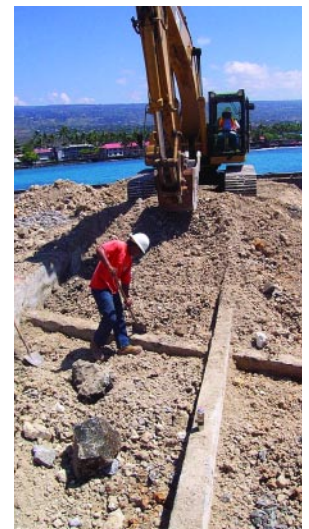
Swervin Irving "working" as he inspects the existing sheet pile corrosion.

Upcoming projects: Ramp K- Phase II Keahole-Kona International Airport

Until next time, work safe and remember, there's always a better way.



Kealakehe High School Increment 4 Phase II with Dick Pacific Construction.



Brian and Cheston "bottle hunting" as they expose the existing tie-beams.

News from Oahu

By Hye Jin Warren



Greetings from Oahu. I have been away from Oahu for almost a year and half so I have had to reacclimate myself to working with the Oahu crew. I started commuting to Hilo in July 2001 and that continued until November 2002. While I occasionally have to go to Hilo to wrap up the Kamehameha School Phase III job, it is so good to be back on Oahu on a consistent basis.

Earlier this month I had the pleasure of attending the "No-Dig Trenchless 2003 Show" in Las Vegas with a large contingent of Koga employees. We had the pleasure of being invited to Mal and Carol's house in Las Vegas for an outstanding cookout. The week before, I was in Southern California and despite the war in Iraq,



Bryant Akiona, Kyle Sakaitani, Mal Koga, Roger Abad & Bob Connolly in Las Vegas for the "No Dig Show" in April.



Schofield Quad F Crew: Standing - Bryant Akiona, Alex Calumag, Max Manipon, Henry Acoba, Asotasi Afi, Kavin Denning, Clayton Nii. Kneeling - Rudy Inong, Jimmy LaForga, Roger Abad, Tom Wong.

it was good to see the tourist destinations in California as well as in Las Vegas seemed to be quite busy. It is my hope that our economy in Hawaii recovers quickly despite this conflict.

Ongoing projects on Oahu include Whole Barracks phase 4A-Renovation of Quad F (Nan Inc), Honolulu Advertiser - Kapolei (Dick Pacific), P-467 B.E.Q. at Pearl Harbor (Dick Pacific), Renovate/Repair Bldgs 113 & 114 (Designer Built System), and Marriott's Ko'Olina Phase 1A (Dick Pacific).

New projects anxiously awaiting to start include Mililani Mauka 20" Waterline (Castle and Cooke), Nauru Tower Ala Moana Blvd (Brett Hill Construction), Keolu Hills Neighborhood Park (CC of Honolulu), Traffic Calming Improvements at Pearl City (CCH-DOT) and Wahiawa-Whitmore Village Waterline (C&C of Honolulu).

I would like to give special thanks to the Lava Warriors from Hilo (William Azevedo, Tommy Young, David Ige, Guy Loa, Cheston Loa, Doug Riley) who came to Oahu to help us get started on the Whole Barracks Phase 4A.

Crunching Out The Numbers

By Keun Pak



It has been a while since I've been asked to write an article for this newsletter, but they couldn't hold out any longer due to the many requests from my fans.

On Saturday, April 12, 2003, Steve Yoshikawa set up a pipe laser training seminar with Allied Machinery. It was a very educational class, especially for a rookie like me. Things I

learned: 1) the old transit set up takes longer than installing programs on a computer, 2) listen to the field guys 'cause they are out there where the work is being done, and 3) at these seminars we get hooked up with cool toys and good food. Thanks to Steve and the people at Allied Machinery for sharing their knowledge.

If you haven't heard, some of us went to Las Vegas supposedly to attend the "No Dig 2003 Show." John Hamada, Efren Mateo, Bryant Akiona, Roger Abad, Billy Acosta, and I were all chauffeured by the

gracious Sandy Okazaki to Mount Charleston for a day in the snow. We got there safely by the skills of Sandy's driving, Efren's precise navigational prowess, and the cheering section provided by the rest of us. At one point we did get lost due to my inability to read maps. Anyway I learned that snowboarding and surfing are nothing alike, the stopping part anyway. Special thanks to Carol and Mal for making sure we all had a good time.

As for work, the estimating department, led by General "O" and Colonel "Jits", are fighting ruthlessly against the numbers. We had a few victories here and there, but are still looking for those big ones. Projects we did get include the Mililani Mauka 20" Waterline, Launch Facilities at Barking Sands and Costco Maui - Expansion. Our bid schedule includes Kaanapali Ocean Resort, Hualalai Parcel 7A Subdivision Improvements, Wailea Beach Villas, and Close Waterline Loop Near Dry-dock 4 at Pearl Harbor.

So till next time, take care, be safe, and have fun.

Bits & Pieces

By Vanessa Suganuma

Wedding bells, champagne and celebration recently visited the family of Mal and Carol Koga. Middle daughter Kristi who is the house manager at the Ronald McDonald House in Manoa recently wed Jason White who is an agent with the FBI. Jason's responsibilities as an agent, has taken him away from our warm weather but has hopes to return and make Hawaii their home. Congratulations to Kristi and Jason!

The stork has brought Reyn Nakagawa a new baby sister. Reyn's parents, Mark and Lisa, welcomed their newest family member Alyssa Lee Akiko on March 21, 2003. This healthy child entered the world at 20 1/2 inches long and weighed in at 9 lbs. 7 oz. Mark is one of our project managers on Oahu and said their family, although not feeling quite prepared being second time parents, is doing fine.

Our best wishes to Keith Kubo for a complete and speedy recovery. Keith, our carpenter foreman, was involved in a recent mishap. Keith and his family are warmed with our support. Get well and see you back at work soon!

Hey! Interested in joining our softball team? Our softball league started on April 10, 2003 and will run through June 6, 2003. All teams meet weekly at 5:30 p.m. at Kapiolani Park, fields one, two and three. With nine more games to play and a current record of 3-2, we are looking to recruit additional members. You don't have to be a Koga employee to join our team and you'll meet other engineers with different engineering backgrounds and from different companies. If you're interested, don't hesitate to call Garrett at 864-3148.

Happy Easter! Do you know what the most identifiable symbol of the Easter egg is? It is the symbol of fertility and new life. In these times of uncertainties that have been exasperated by the War in Iraq and the scare of SARS we should all embrace the Easter holiday with our families. Plan to spend extra quality time with our children and celebrate by coloring eggs and then enjoy playing the most traditional Easter egg games of the Easter Egg Hunt and the Easter Egg Roll. Hope you all have fun!



Ken Grote from St. Paul Insurance providing Flagger & Work Zone Safety Training at our Sand Island facility in February.

KOGA REPORT

The Newsletter of
Koga Engineering & Construction, Inc.

Volume 14, Number 2 • April 2003

Phone (808) 845-7829 • Fax (808) 845-3742

www.KogaEngineering.com • info@kogaeng.com

We dig...Hawaii!



P.O. Box 31289
Honolulu, Hawaii 96820